



**DIPLOMATIC
HYDRAULICS**

45 100/104 ED



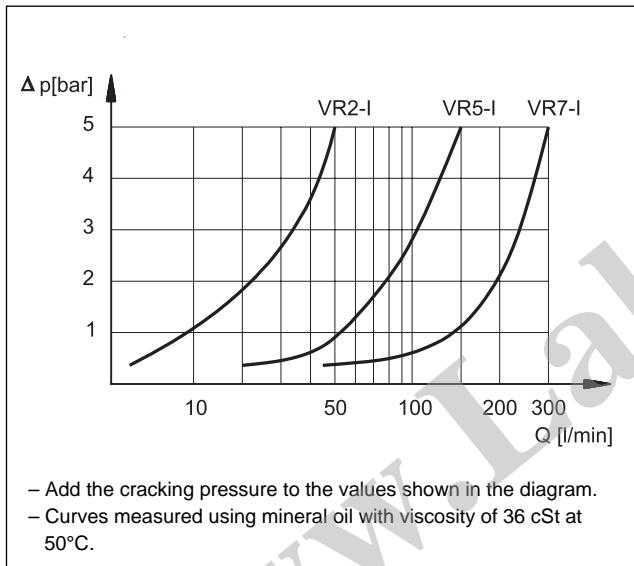
VR*-I CHECK VALVES SERIES 32

CARTRIDGE TYPE

p max (see technical specifications table)

Q max (see technical specifications table)

PRESSURE DROP ΔP-Q



OPERATING PRINCIPLE

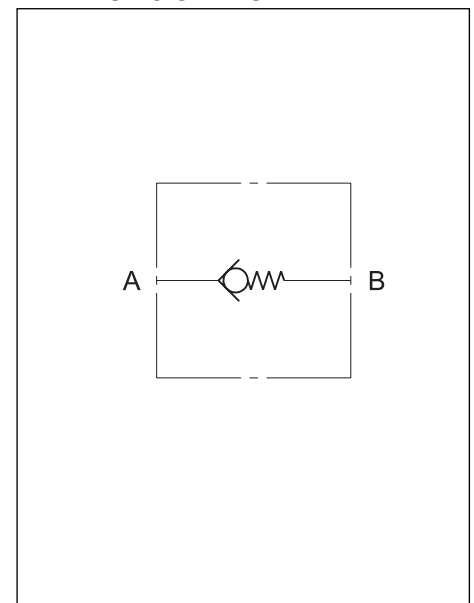
- VR*-I valves are one-way check valves cartridge type construction and can be used in blocks or panels.
- In rest conditions, the valve poppet, which is a cone on edge seal type, is kept closed by a spring with fixed setting.
- The poppet opens when the pressure in the intake line "A" exceeds the set value of the spring, added to any pressure in the outlet line "B".
- Available in three sizes for flow rates of up to 300 l/min and with three different cracking pressures.

TECHNICAL SPECIFICATIONS

Valve code	Nominal dimension	Maximum flow rate l/min	Mass kg	Max. operating pressure bar	
VR 2 - I	1/4"	50	0,1	320	320
VR 5 - I	3/4"	150	0,2	250	320
VR 7 - I	1" 1/4	300	0,8		

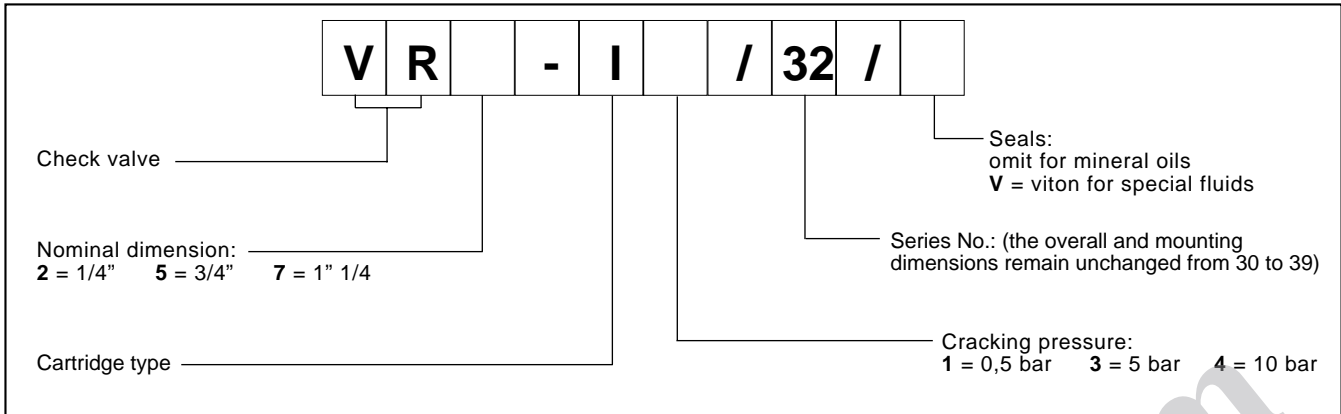
Ambient temperature range	°C	-20 ÷ +50
Fluid temperature range	°C	-20 ÷ +80
Fluid viscosity range	cSt	10 ÷ 400
Fluid contamination degree	According to NAS 1638 class 10	
Recommended viscosity	cSt	25

HYDRAULIC SYMBOL





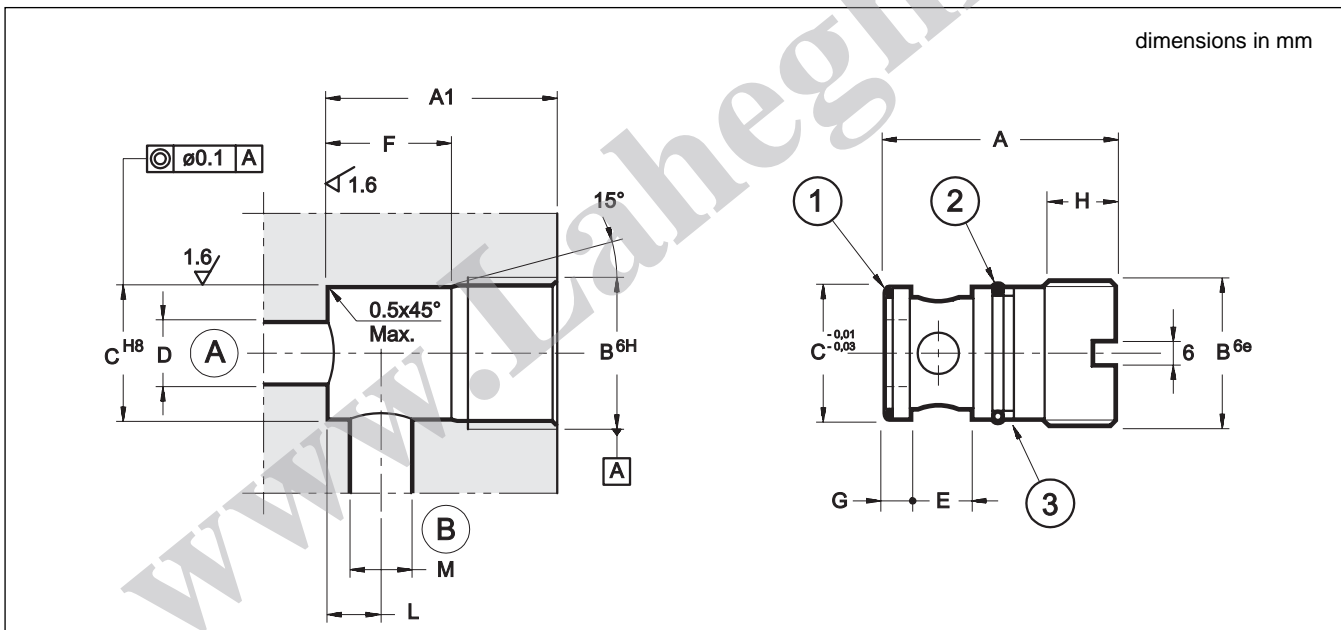
1 - IDENTIFICATION CODE



2 - HYDRAULIC FLUIDS

Use mineral oil-based hydraulic fluids, with the addition of suitable anti-frothing and anti-oxidising agents.
 For the use of other fluid types (water glycol, phosphate esters and others), please consult our technical department.

3 - OVERALL AND MOUNTING DIMENSIONS



Note: the dimension **A1** must be at least 1 mm higher than the dimension **A** indicated in the table herebelow

Valve type	A	B	ØC	ØD max	E	F	G	H	L	ØM max	1	2	3	Tightening torque
VR 2-I	41	M24x1,5	22	9	10	22	4	14	9	9	OR 119	OR 3068	PARBAK 8-115	25 Nm
VR 5-I	43	M30x1,5	27	15	13,5	26	4,5	12	11	12	OR 3081	OR 2093	PARBAK 8-021	50 Nm
VR 7-I	72	M45x2	41	21	20	40	7,5	22	16,5	16	OR 3137	OR 4137	PARBAK 8-220	80 Nm

	<p>DIPLOMATIC OLEODINAMICA SpA 20025 LEGNANO (MI) - P.le Bozzi, 1 / Via Edison Tel. 0331/472111 - Fax 0331/548328</p>
--	--